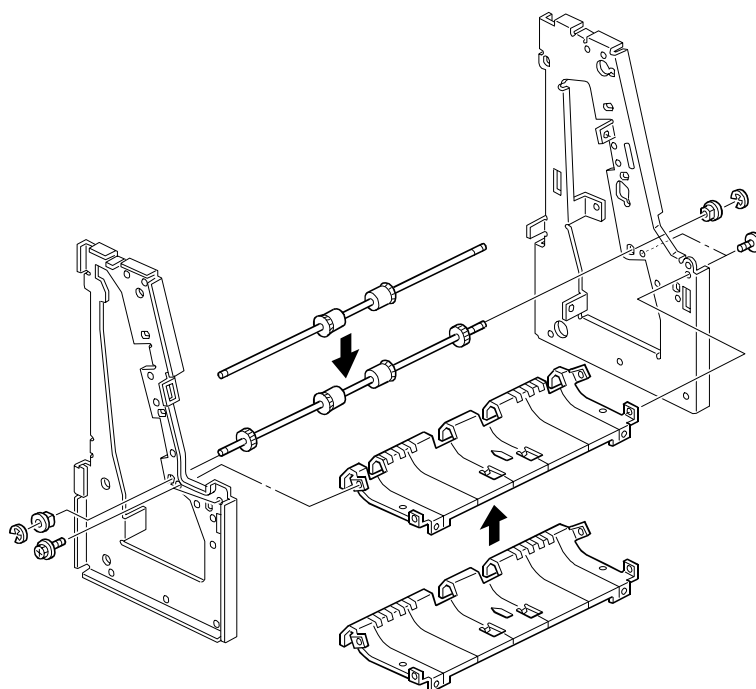


Model: NAD 30S/30/40 1000 Finisher		Date: 07-Apr-00	No.: MA681001
Modified Article: Transport Roller and Lower Entrance Guide		Prepared by: E. Fukuyama	
From: Technical Services Dept., GTS Division			
Reason for Modification:	<input checked="" type="checkbox"/> Parts catalog correction	<input type="checkbox"/> Vendor change	<input type="checkbox"/> To meet standards ()
	<input type="checkbox"/> To facilitate assembly	<input type="checkbox"/> To improve reliability	
	<input type="checkbox"/> Part standardization	<input type="checkbox"/> Other	

The following should be corrected.

The transport roller (**A6812331**) has 4 rollers attached to the shaft and the Lower Entrance Guide (**A6812221**) has 4 cut-outs for the rollers. This is a result of parts modifications applied to machines from the first mass production lot.

Old part number	New part number	Description	Q'ty	Int	Page	Index	Note
A6812331		Transport Roller	1	-	15	27	
A6812221		Lower Entrance Guide	1	-	15	29	



Model: NAD 30S/30/40 1000 Finisher		Date: 04-Jun-01	No.: MA681002
Modified Article: Junction Gate		Prepared by: E. Fukuyama	
From: Technical Services Dept., GTS Division			
Reason for Modification:	<input type="checkbox"/> Parts catalog correction <input type="checkbox"/> To facilitate assembly <input type="checkbox"/> Part standardization	<input type="checkbox"/> Vendor change <input checked="" type="checkbox"/> To improve reliability <input type="checkbox"/> Other	<input type="checkbox"/> To meet standards ()

The material of the junction gate shaft has been changed to improve its strength and durability.

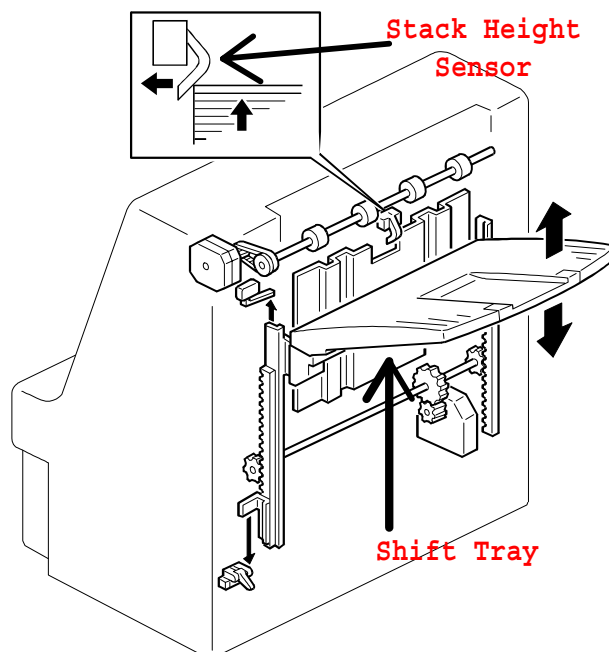
Old part number	New part number	Description	Q'ty	Int	Page	Index
A6812411	A6812412	Junction Gate	1-1	X/O	15	22

MODEL NAME	V/Hz	DESTINATION	CODE	SERIAL NO.
SR720	110/50	USA, Canada	A681-15	1B49040001
SR720	110/50	USA, Canada	A681-17	A7729030001
SR720	220/50	Europe	A681-22	AR29040001
SR720	220/50	Europe	A681-26	3R00490001
SR720	220/50	Europe	A681-55	L0299032695

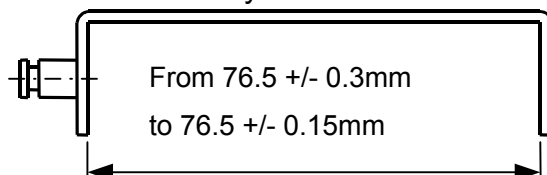
Model: NAD 30S/30/40 1000 Finisher		Date: 07-Dec-01	No.: MA681003
Modified Article: Slider - Shift Tray		Prepared by: E. Fukuyama	
From: Technical Services Dept., GTS Division			
Reason for Modification:	<input type="checkbox"/> Parts catalog correction <input type="checkbox"/> To facilitate assembly <input type="checkbox"/> Part standardization	<input type="checkbox"/> Vendor change <input checked="" type="checkbox"/> To improve reliability <input type="checkbox"/> Other	<input type="checkbox"/> To meet standards ()

If the length of the Slider for the Shift Tray is near the specification maximum, it sometimes prevents the tray from activating the Stack Height Sensor. To ensure that the sensor is properly activated, the margin of error for the Slider length has been minimized from 76.5 \pm 0.30mm \rightarrow \pm 0.15mm.

Old part number	New part number	Description	Q'ty	Int	Page	Index
A6662251	A6813426	Slider – Shift Tray	1-1	X/O	11	8



Slider – Shift Tray



Model: NAD 30S/30/40 1000 Finisher

Date: 07-Dec-01

No.: MA681003

RCL (Japan) Production

Model Name	Destination	Code	Serial Number
SR 720	USA, Canada	A681-15	1B41020001
	USA, Canada, Europe, Asia, Taiwan, China, etc	A681-17	A7721011946
	Europe, Asia	A681-22	AR21020001
	Europe, Australia	A681-26	3R00210001
	USA, Canada, Europe,	A681-55	L0291020001

Model: NAD 30S/30/40 1000 Finisher		Date: 19-Dec-01	No.: MA681004
Modified Article: Stepping Motor - DC 18W		Prepared by: E.Fukuyama	
From: Technical Services Dept., GTS Division			
Reason for Modification:	<input checked="" type="checkbox"/> Parts catalog correction <input type="checkbox"/> To facilitate assembly <input type="checkbox"/> Part standardization	<input type="checkbox"/> Vendor change <input type="checkbox"/> To improve reliability <input type="checkbox"/> Other	<input type="checkbox"/> To meet standards ()

The following part number should be corrected. Please correct your parts catalog.

Old part number	New part number	Description	Q'ty	Int	Page	Index
AX040096	AX040056	Stepping Motor – DC 18W	1	-	9	3